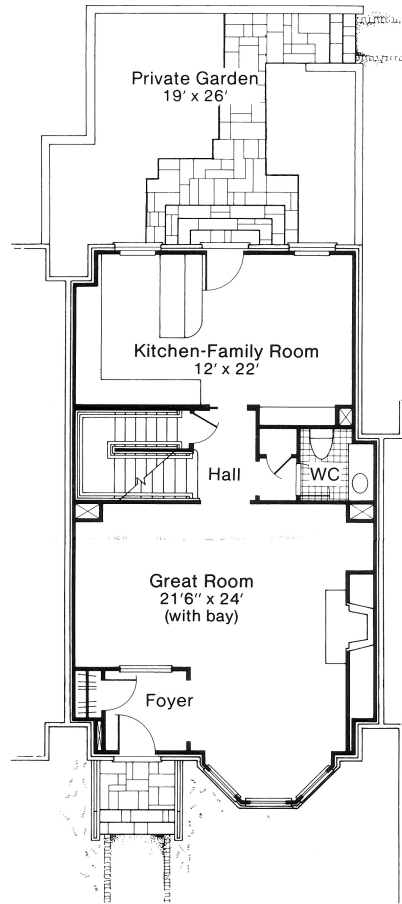
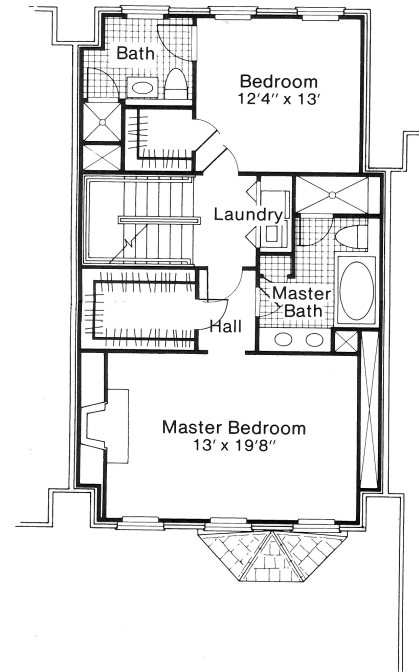


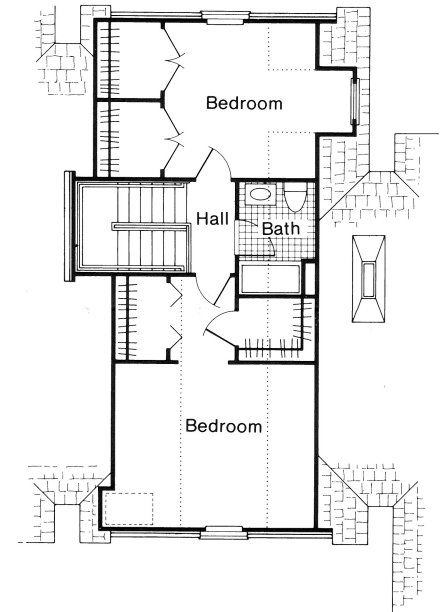
**BASEMENT**  
560 sq. ft.



**FIRST FLOOR**  
1,050 sq. ft.



**SECOND FLOOR**  
1,000 sq. ft.



**THIRD FLOOR**  
750 sq. ft.  
(At buyers option.)

## THE BRADFORD

2-4 BR, 2 ½-3 ½ BA

FR, Finished BSMT